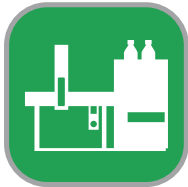


**GERSTEL**  
certified

# SUPPLIES



## MultiPurpose Sampler MPS



## GERSTEL® MultiPurpose Sampler MPS

Versatile autosampler and sample preparation robot for GC/MS, LC/MS, and standalone WorkStation operation.

Modern laboratory processes frequently offer significant potential for improvement in the fields of sample preparation and sample introduction. Improving productivity and performance while cutting per sample cost is realistic provided you have chosen an autosampler that rises to the task and can be adapted to meet new challenges as demands change.

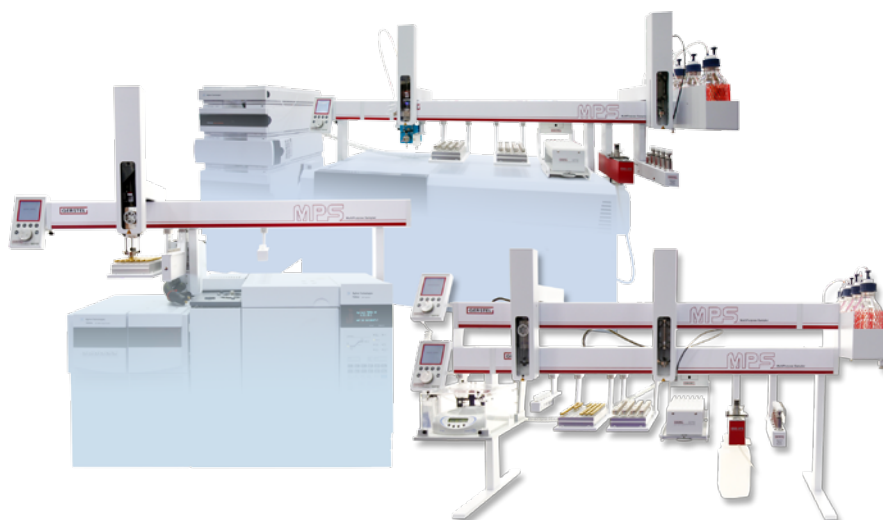
The GERSTEL MultiPurpose Sampler MPS enables highly efficient automation of sample preparation and sample introduction for GC/MS and LC/MS. Or you can use the MPS as WorkStation independent of the analysis system(s), providing prepared samples for multiple techniques in the lab. Whichever MPS you choose, you are sure to get reliable results and increased throughput combined with the flexibility to adapt effortlessly to changes and new challenges.

This Supplies catalogue provides a list of certified consumables, accessories and spare parts essential for the smooth operation of your GERSTEL® MPS. You have the right to demand the highest quality performance from GERSTEL systems and we have compiled this list so that this performance can be maintained throughout the life of your system. Please use only consumables, accessories and spare parts provided by GERSTEL. All GERSTEL products are made to exact specifications. Use of products not approved by GERSTEL can cause system malfunction or damage and may void system warranty.

If you have any questions please do not hesitate to contact GERSTEL. Typically, the most efficient way is to contact your local sales representative.

### Content

<b>Syringe kits and Syringe holders</b>	<b>3</b>
<b>Syringes</b>	<b>4</b>
Microliter syringe	4
Headspace syringe	6
Microliter syringe for LC & LC/MS	8
Syringe kits for LC/MS	8
Microliter syringe for SPE/DPX	9
Dilutor syringe	9
Sideport syringe	9
<b>Vials and Caps</b>	<b>10</b>
Crimp Cap vials	10 - 11
Crimp Caps	10 - 11
Screw neck vials	12 - 13
Screw caps	12 - 13
<b>SPME fiber</b>	<b>14</b>
SPME fiber holder	14
SPME fiber kits	14
SPME Stableflex fiber kits	15
SPME metal fiber kits	15
MFX SPME Stableflex fiber kits	16
MFX SPME metal fiber kits	16 - 17
<b>Sample loops</b>	<b>18 - 19</b>



### GERSTEL Syringe kit 10 µL with Universal Syringe Holder

consisting of:  
 GERSTEL universal syringe holder;  
 plunger holder;  
 2 syringes 10 µL

volume µL	units	Part No.
10	1	010054-000-00



### GERSTEL Headspace Syringe kit

consisting of:  
 GERSTEL universal headspace syringe holder;  
 plunger holder;  
 2 syringes

volume mL	units	Part No.
1.0	1	010055-010-00
2.5	1	010055-025-00



### GERSTEL SPE/DPX Syringe kit

consisting of:  
 GERSTEL universal headspace syringe holder;  
 plunger holder;  
 2 syringes;  
 needles

volume mL	units	Part No.
1.0 - 2.5	1	018821-025-00
5	1	018821-050-00



### CTC Syringe Holders

volume µL	units	Part No.
10	1	093632-000-00
25	1	093632-001-00
100	1	093632-002-00
250	1	093632-003-00
500	1	093632-004-00
1000	1	093632-005-00
2500	1	093632-012-00
5000	1	093632-013-00



**Microliter syringes for GC & GC/MS**

*for liquid injection*

The listed syringes all have 23 Gauge needles (OD = 0.63 mm) and are compatible with the GERSTEL® Septumless Head (SLH). Needles have conical tips (type C or AS).

**For GERSTEL Universal syringe holder (013822-000-00).**  
For use with ALEX/TDU/DHS Gripper (Not for SPE/DPX gripper)



with fixed needle	volume μL	gastight	needle OD/ID/L/Tip [mm]	unit	Part No.
needle in needle	1.2		0.5/.../.../26P	1	093611-010-00
	5		0.63/.../.../C	1	009970-021-00
	10		0.47/.../.../...	1	009970-058-00
	10		0.63/.../.../C	1	009970-024-00
	10	●	0.63/.../.../C	1	009970-022-00
<b>replacement plunger</b> for syringe 009970-022-00	10	●		1	009970-030-00



with replaceable needle	volume μL	gastight	needle OD/ID/L/Tip [mm]	unit	Part No.
	5	●	0.63/0.11/51.5/C	1	009970-015-00
	10	●	0.63/0.11/51.5/C	1	009970-016-00
	100	●	0.63/0.24/52.0/C	1	009970-018-00
	250	●	0.63/0.24/52.0/C	1	009970-019-00
	500	●	0.63/0.24/52.0/C	1	009970-067-00
	1000	●	0.63/0.32/53.5/C	1	009970-020-00
<b>replacement plunger</b>					
	10	●		1	009970-031-00
	100	●		1	009970-032-00
	250	●		1	009970-033-00
	1000	●		1	009970-034-00
<b>replacement needle</b>					
	5		0.63/0.11/51.5/C	2	009970-048-00
	10		0.63/0.11/51.5/C	2	009970-040-00
	10		0.47/0.11/51.5/C	2	009970-043-00
	10		0.63-0.47/0.11/51.5/C	2	009970-047-00
	100-500		0.63/0.24/52.0/C	2	009970-041-00
	100-500		0.72/0.37/51.0/LC	2	009970-069-00
	1000		0.63/0.32/53.5/C	2	009970-042-00
	1000		0.72/0.37/53.5/L C	2	009970-061-00

## Microliter syringes for GC & GC/MS

for liquid injection

### CTC Syringe Holders for GC and GC/MS.

Syringes for use only with dedicated syringe holders, specific to the syringe size.

	volume μL	gastight	needle OD/ID/L/Tip [mm]	unit	Part No.
needle in needle	1,2		26-AS	1	093611-010-00
with fixed needle	5		26S-AS	1	093611-011-00
with fixed needle	10		26S-AS	1	093611-012-00
with fixed needle	10	●	26S-AS	1	093611-063-00
with fixed needle	10		26S-2	1	093611-013-00
with fixed needle	10		23S-AS	1	093611-068-00
with fixed needle	25	●	26S-AS	1	093611-014-00
with fixed needle	100	●	26S-AS	1	093611-015-00
with fixed needle	250	●	26-AS	1	093611-016-00
with fixed needle	500	●	26-AS	1	093611-037-00

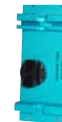


### Syringes for 10μL CTC Syringe Holder (093632-000-00) for GC and GC/MS.

Syringe holder type detection must be deactivated during operation.

Not compatible with TDU/ALEX or SPE/DPX gripper.

	volume μL	gastight	needle OD/ID/L/Tip [mm]	unit	Part No.
with fixed needle	5		0.63/.../50.0/C	1	009970-001-00
with fixed needle	10		0.63/.../50.0/C	1	009970-002-00
with fixed needle	25	●	0.63/.../50.0/C	1	009970-004-00
with replaceable needle	100	●	0.63/0.15/50.0/C	1	009970-005-00
with replaceable needle	250	●	0.63/0.15/50.0/C	1	009970-006-00
<b>replacement needle</b>	100-250		0.63/0.15/50.0/C	2	009970-007-00



**Part No.**



**Headspace syringes** for Headspace injection up to 100°C



	volume μL	gastight	needle OD/ID/L/Tip [mm]	unit	Part No.
with replaceable needle	1	●	0.63/0.15/57.0/HS	1	<b>009980-069-00</b>
with replaceable needle	2.5	●	0.63/0.15/57.0/HS	1	<b>009980-068-00</b>
<b>replacement plunger</b>	1	●		1	<b>009980-071-00</b>
	2.5	●		1	<b>009980-070-00</b>
<b>replacement needle</b>	1 - 2.5		0.63/0.15/57.0/HS	2	<b>009980-046-00</b>
	1 - 2.5		0.63/0.32/57.0/HS	2	<b>009980-052-00</b>



**Headspace syringes** for Headspace injection up to 150°C



	volume μL	gastight	needle OD/ID/L/Tip [mm]	unit	Part No.
with replaceable needle	1	●	0.63/0.15/57.0/HS	1	<b>009980-054-00</b>
with replaceable needle	2.5	●	0.63/0.32/57.0/HS	1	<b>009980-055-00</b>
<b>replacement plunger</b>	1	●		1	<b>009980-065-00</b>
	2.5	●		1	<b>009980-053-00</b>
<b>replacement needle</b>	1		0.63/0.15/57.0/HS	2	<b>009980-046-00</b>
	2.5		0.63/0.32/57.0/HS	2	<b>009980-052-00</b>

**Part No.**

**Heated liquid syringes**

for use with HS syringe holder and adapter 010711-000-00



	volume μL	gastight	needle OD/ID/L/Tip [mm]	unit	Part No.
with fixed needle	10		0.63/.../54.2/C	1	<b>009970-057-00</b>
with replaceable needle	10		0.63/0.11/54.2/C	1	<b>009970-051-00</b>
<b>replacement needle</b>					
	10		0.63/0.11/54.2/C	2	<b>009970-052-00</b>
	10		0.47/0.11/54.2/C	2	<b>009970-060-00</b>

	volume μL	gastight	needle OD/ID/L/Tip [mm]	unit	Part No.
with replaceable needle	100	●	<b>Please note: Replace</b>	1	<b>009970-018-00</b>
with replaceable needle	250	●	<b>needle w/ 009970-072-00</b>	1	<b>009970-019-00</b>
with replaceable needle	500	●	<b>before use</b>	1	<b>009970-067-00</b>
<b>replacement plunger</b>					
	100	●		1	<b>009970-032-00</b>
	250	●		1	<b>009970-033-00</b>
<b>replacement needle</b>					
	100-500		0.63/0.24/57.0/C	2	<b>009970-072-00</b>



### Microliter syringes for LC & LC/MS

The needle types 22 and 22S have the same outer diameter: 0.72 mm OD and a straight needle tip (Type LC or 3). Type 22 and 22S differ only by their internal diameter ( 0.41 mm and 0.15 mm ID respectively); Due to the larger ID, a type 22 needle enables faster syringe filling: Up to 200 µL/sec for type 22 as opposed to 10 – 20 µL/sec for the 22S.



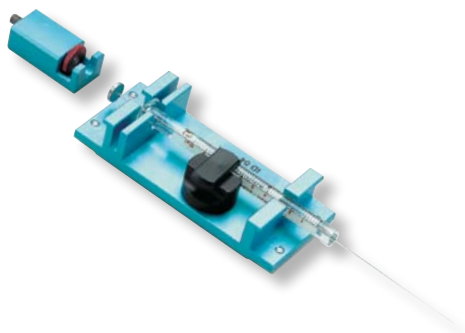
volume µL	Type	needle gauge	unit	Part No.
10	C	22S	1	093711-014-00
25	C	22S	1	093711-001-00
25	X	22S	1	093711-042-00
50	X	22S	1	093711-053-00
100	C	22S	1	093711-002-00
100	C	22	1	093711-028-00
100	X	22S	1	093711-043-00
100	X	22	1	093711-044-00
250	C	22	1	093711-003-00
500	C	22	1	093711-027-00
1000	C	22	1	093711-004-00
2500	C	22	1	093711-005-00
5000	C	22	1	093711-006-00
5000		19	1	093731-113-00

#### replacement plunger

10	C		10	093611-026-00
25	C		10	093611-020-00
25	X		3	093711-048-00
50	X		3	093711-054-00
100	C		10	093611-021-00
100	X		3	093711-049-00
250	C		10	093711-022-00
500	C		10	093711-026-00
1000	C		1	093711-019-00
2500	C		1	093711-020-00
5000	C		1	093711-021-00

### Syringe kits for LC & LC/MS

with syringe detect, consisting of: plunger holder, syringe adapter and 2 syringes



volume µL	Type	needle gauge	unit	Part no.
10	C	22S	1	093711-007-00
25	C	22S	1	093711-008-00
25	X	22S	1	093711-045-00
50	X	22S	1	093711-051-00
100	C	22S	1	093711-009-00
100	X	22S	1	093711-046-00
100	X	22	1	093711-052-00
250	C	22	1	093711-010-00
500	C	22	1	093711-047-00
1000	C	22	1	093711-011-00
2500	C	22	1	093711-012-00
5000	C	22	1	093711-013-00

### Microliter syringes for SPE/DPX

for use with GERSTEL-Solid Phase Extraction (SPE) and GERSTEL-Disposable Pipette Extraction (DPX)



	volume μL	gastight	needle OD/ID/L/Tip [mm]	unit	Part No.
with replaceable needle	1000	●	without needle	1	009980-064-00
with replaceable needle	2500	●	without needle	1	009980-063-00
with replaceable needle	5000	●	without needle	1	009970-071-00
<b>replacement plunger</b>					
	1000	●		1	009980-065-00
	2500	●		1	009980-053-00
	5000	●		1	009970-066-00
<b>replacement needle</b>					
	1000-2500		0.63/0.36/60.0/C	2	009980-066-00
	1000-2500		0.72/0.37/60.0/LC	2	009980-067-00
	5000		0.72/0.37/60.0/LC	2	009970-070-00



### MPS dilutor syringes

	volume	unit	Part No.
<b>Syringe</b>	1 mL	1	093631-091-00
	2.5 mL	1	093631-092-00
	5 mL	1	093631-093-00
	10 mL	1	093631-094-00
<b>replacement plunger</b>			
	1 mL	1	093632-038-00
	2.5 mL	1	093632-039-00
	5 mL	1	093632-040-00
	10 mL	1	093632-041-00
<b>PTFE ferrule</b>		1	093632-045-00



### MPS sideport syringes without needle

For use with MPS sideport syringe adapter (not compatible with GERSTEL® Universal Syringe holder)

	volume μL	gastight	needle Gauge/Type	unit	Part No.
for replaceable needle	20	●	without needle	1	093631-096-00
for replaceable needle	80	●	without needle	1	093631-095-00
<b>replacement plunger</b>					
	20	●		10	093611-034-00
	80	●		10	093611-027-00
<b>replacement needle</b>					
	20		22 s/PS3	3	093711-023-00
	20		26/AS	3	093611-029-00
	80		22/PS3	3	093711-022-00
	80		26/AS	3	093611-028-00





**Sample vials and caps**

**Crimp cap vials**

Type	mL	Seal size (mm)	unit	Part no.
clear	0.7	8	100	093640-052-00
clear	1.5	11	100	093640-004-00 <b>1</b>
clear	2.5	11	100	093640-074-00
clear	10	20	100	093640-005-00
clear	10	20	1000	093640-069-00 <b>2</b>
clear	20	20	100	093640-006-00
clear	20	20	1000	093640-068-00
clear	25	20	100	093640-073-00 <b>3</b>
clear	100	20	88	093640-062-00
Solvent bottle, includes cap & septum	100	20	1	093631-054-00 <b>4</b>

**Crimp caps with septum for vials**

If vials need to be reopened and emptied after analysis, magnetic vial caps with aluminum edges (Bi-metal) offer the best solution. The softer edges allow easy crimping and decrimping using a hand-crimper. If steel caps are used, it is recommended to use a bench-top crimper.

Type	for Seal size (mm)	unit	Part no.
Aluminum Septum: Silicone white/PTFE red,	8	100	093640-053-00
Magnetic, golden Septum: Silicone red/PTFE red,	11	100	093640-007-00
Aluminum Septum: natural rubber red-orange/ PTFE Transparent, 60° shore A,	11	100	093640-089-00
Aluminum Septum: Silicone blue/PTFE white, 45° shore A,	11	100	093640-090-00
Magnetic, golden, Septum: Silicone blue, PTFE white	20 20	100 1000	093640-008-00 093640-015-00
Magnetic, golden, Pharma-Fix-Septum: Butyl /PTFE white,	20	100	093640-070-00
Bi-Metal, Magnetic, red, Septum: Silicone blue, PTFE white,	20	100	093640-063-00
Aluminum, Septum: Silicone blue/PTFE white, 35° Shore A,	20	100	093640-067-00
Aluminum, Septum: Silicone white, PTFE beige, 35° Shore A,	20	100	011912-002-00
PE Cap, transparent Septum: Silicone blue/PTFE white 45° Shore A,	20	10	093640-097-00



## Vials for SPME

Type	mL	Seal size (mm)	unit	Part no.
Clear, with imprint »SPME« with extra thick crimp neck	20	20	100	093640-035-00

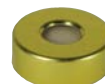


## Crimp caps for SPME

Magnetic, golden, with septum

For SPME applications, crimp caps of steel with silicone septa are recommended. If the sample is analyzed for silicone, it is recommended to use butyl rubber septa or natural rubber septa. For a leak-free seal, it is recommended to use a bench-top crimper.

Type	for Seal size (mm)	unit	Part no.
Septum: Silicone white/PTFE blue, 1.5 mm, 55° Shore A, for SPME vial	20	100	093640-030-00
Septum: Silicone creme, PTFE red, 1.5 mm, 55° Shore A, for SPME vial	20	100 1000	093640-031-00 093640-066-00
Septum: Natural rubber, red-orange/PTFE, 1.3 mm, 60° Shore A, for SPME vial	20	100	093640-034-00
Septum: Butyl red / PTFE grey, 1.3 mm, 55° Shore A, for SPME vial	20	100	093640-050-00



## Vials, inserts, and caps for HSSE Twister inserts

Type	mL	Seal size (mm)	unit	Part no.
Clear, with imprint »Twister«, with extra thick crimp neck	20	20	100	012491-000-00
Insert for Twister Vial 012491-000-00			100	012492-000-00
Aluminium Headspace Crimp cap, Septum: Silicone white/PTFE beige, 3.25mm, 35° shore A		20	100	011912-002-00





**Screw cap vials**

Vials	mL	Thread Ø	unit	Part no.
Clear, Ø11.6 x 32 mm, for 20 mm Twisters	1,1	9	100	<b>093640-045-00</b>
Clear, Ø11.6 x 32 mm, for 10 mm Twisters	1,5	9	100	<b>093640-046-00</b>
Brown, green screw caps, Septum: PTFE/Silikone/PTFE	1,5	9	100	<b>089355-084-00</b>
Clear, blue screw caps, Septum: rubber red/PTFE	1,5	9	100	<b>089355-085-00</b>
Clear, Ø11.6 x 32 mm, short screw neck	1,5	9	100	<b>093640-095-00</b>
Clear, Ø15 x 45 mm HIGH RECOVERY VIAL	3,5	11	100	<b>093640-098-00</b>
Clear, Ø14.7 x 45 mm	4	11	100	<b>093640-076-00</b>
Clear,	10	18	100	<b>093640-038-00</b>
Brown	10	18	100	<b>093640-039-00</b>
Clear,	20	18	100	<b>093640-036-00</b>
Brown,	20	18	100	<b>093640-037-00</b>
Clear, Ø27.5 x 95 mm	40	18	100	<b>094210-000-00</b>
Microliter inserts for for 2 mL screw cap vials, clear	0,1		100	<b>093640-029-00</b>
For 10 mm Twisters: Insert Ø 6 x 31 mm, clear, flacher Boden	0,2		100	<b>093640-047-00</b>

**Screw caps with septa**

	Thread Ø	unit	Part no.
PP transparent, Septum: Silicone blue / PTFE white, 1.3 mm, 45° Shore A	9	100	<b>093640-072-00</b>
PP blue, Septum: Silicone white/PTFE red, 1.0 mm, 55° shore A	9	100	<b>093640-075-00</b>
UltraClean™, magnetic, golden Septum: Silicone white/PTFE red 1.0 mm	9	100	<b>093640-079-00</b>
PP black, Septum: Silicon blue/PTFE white, 1.3 mm 45° shore A	11	100	<b>093640-081-00</b>
PP black, Septum: Natural rubber red-orange/ TEF transparent, 1.3 mm	11	100	<b>093640-077-00</b>



## Screw caps with septa

Magnetic metal based vial caps enable transport and automation using the GERSTEL MultiPurpose Sampler

	Thread Ø	unit	Part no.
Septum: Silicone blue / PTFE white, 1.3 mm, 35° Shore A	18	100	093640-040-00
Septum: Silicon white / PTFE blue, 1.5 mm, 60° Shore A	18	100	093640-041-00
Septum: Butyl red / PTFE grey, 1.6 mm, 55° Shore A	18	100	093640-042-00
Septum: Viton black, 1.0 mm, 75° Shore A	18	100	093640-043-00
Septum: Natural rubber / TEF; 1.3 mm, 60° Shore A	18	100	093640-100-00
Polypropylene white, <b>non-magnetic</b> Septum: Silicone natural / PTFE beige, 3.2 mm; 45° Shore A,	18	100	094210-003-00
Polypropylene white, <b>non-magnetic</b> with hole 12,5 mm without Septum	18	100	094210-001-00



## Septa for screw caps for 10/20 mL screw cap vials

Septum	unit	Part no
Silicone blue transparent / PTFE white, 1.3 mm, 35° Shore A	100	093640-057-00
Silicone white / PTFE blue, 1.5 mm, 60° Shore A	100	093640-056-00
Butyl red / PTFE grey, 1.6 mm, 55° Shore A	100	093640-058-00
Viton black, 1.0 mm, 75° Shore A	100	093640-059-00

## PolyMag screw caps

Magnetic polymer based vial caps enable transport and automation using the GERSTEL MultiPurpose Sampler

	Thread Ø	unit	Part no.
Septum: Silicone, PTFE, 1.5 mm	9	100	093640-091-00
Septum: Silicone, PTFE, 1.5 mm	18	100	093640-092-00
Septum: Silicone, PTFE, 3.2 mm	18	100	093640-093-00
Septum: Silicone, PTFE, 3.2 mm	24	100	093640-094-00



**Part No.**



**SPME fiber holder**

*Designed for mounting SPME fibers for automated SPME analysis.*

**093639-000-00**

Fibers used for automated SPME analysis have no spring – in contrast to fibers for manual SPME. Consequently, there are separate holders for each fiber type. The fibers listed here are designed exclusively for automated SPME analysis using the MPS. They are not suitable for manual SPME analysis.

For use with the GERSTEL® Cooled Injection System, CIS  
23 gauge (OD=0.63 mm) fibers and SPME liner are recommended.

**SPME fiber kits**

*1 package (3 units)*



**gases and low molecular compounds**

- 75 µm carboxen/polydimethylsiloxane  
23 gauge (OD = 0.63 mm) **093639-009-00**

**gases and low molecular compounds**

- 85 µm carboxen/polydimethylsiloxane,  
on StableFlex™ fiber  
23 gauge (OD = 0.63 mm) **093639-024-00**

**volatiles and semivolatiles**

- 85 µm polyacrylate
- 100 µm polydimethylsiloxane
- 7 µm polydimethylsiloxane coating  
23 gauge (OD = 0.63 mm) **093639-028-00**

**volatile or polar organics in water**

- 75 µm carboxen/polydimethylsiloxane
- 65 µm polydimethylsiloxane/divinylbenzene
- 85 µm polyacrylate  
23 gauge (OD = 0.63 mm) **093639-029-00**

**flavors and odors**

- 100 µm polydimethylsiloxane,
- 65 µm polydimethylsiloxane/divinylbenzene,
- 75 µm carboxen/polydimethylsiloxane  
23 gauge (OD = 0.63 mm) **093639-030-00**

**flavors**

- 50/30 µm divinylbenzene/carboxen/polydimethylsiloxane  
on StableFlex fiber 23 gauge (OD = 0.63 mm) **093639-026-00**
- on 2 cm StableFlex fiber 23 gauge (OD = 0.63 mm) **093639-027-00**

- 100 µm polydimethylsiloxane
- 85 µm carboxen/polydimethylsiloxane
- 50/30 µm DVB/carboxen/polydimethylsiloxane  
23 gauge (OD = 0.63 mm) **093639-037-00**



**Part No.**

**SPME fiber kits**

for automated SPME using the MPS;  
1 package (3 units)

**volatiles**

- 100 µm polydimethylsiloxane  
23 gauge (OD = 0.63 mm) **093639-001-00**

**non-polar semivolatiles**

- 3 µm polydimethylsiloxane  
23 gauge (OD = 0.63 mm) **093639-020-00**

**non-polar high molecular weight compounds**

- 7 µm polydimethylsiloxane  
23 gauge (OD = 0.63 mm) **093639-021-00**

**volatiles, amines, and nitroaromatic compounds**

- 65 µm polydimethylsiloxane  
23 gauge (OD = 0.63 mm) **093639-005-00**

**volatiles, amines, and nitroaromatic compounds**

- 65 µm polydimethylsiloxane/divinylbenzene  
23 gauge (OD = 0.63 mm) **093639-022-00**

**polar semivolatiles**

- 85 µm polyacrylate, partially crosslinked  
23 gauge (OD = 0.63 mm) **093639-023-00**
- 60 µm Carbowax-Polyethylene Glycol  
on metal fiber  
23 gauge (OD = 0.63 mm) **093639-043-00**

**SPME Stableflex fiber kits**

23 gauge (OD = 0.63 mm), 4 fibers

- 50/30 µm Divinylbenzene/Carboxen / PDMS
  - 65 µm Polydimethylsiloxane/Divinylbenzene
  - 85 µm Carboxen/Polydimethylsiloxane
  - 85 µm Polyacrylat
- 23 gauge (OD = 0.63 mm) **093639-031-00**

**SPME metal fiber kits**

23 gauge (OD = 0.63 mm), 1 fiber

**volatiles**

- 100 µm polydimethylsiloxane, non-bonded  
23 gauge (OD = 0.63 mm) **093639-033-00**

**non-polar semivolatiles**

- 30 µm polydimethylsiloxane, non bonded  
23 gauge (OD = 0.63 mm) **093639-034-00**

**non-polar high molecular weight compounds**

- 7 µm polydimethylsiloxane, bonded  
23 gauge (OD = 0.63 mm) **093639-035-00**

**volatiles, amines, and nitroaromatic compounds**

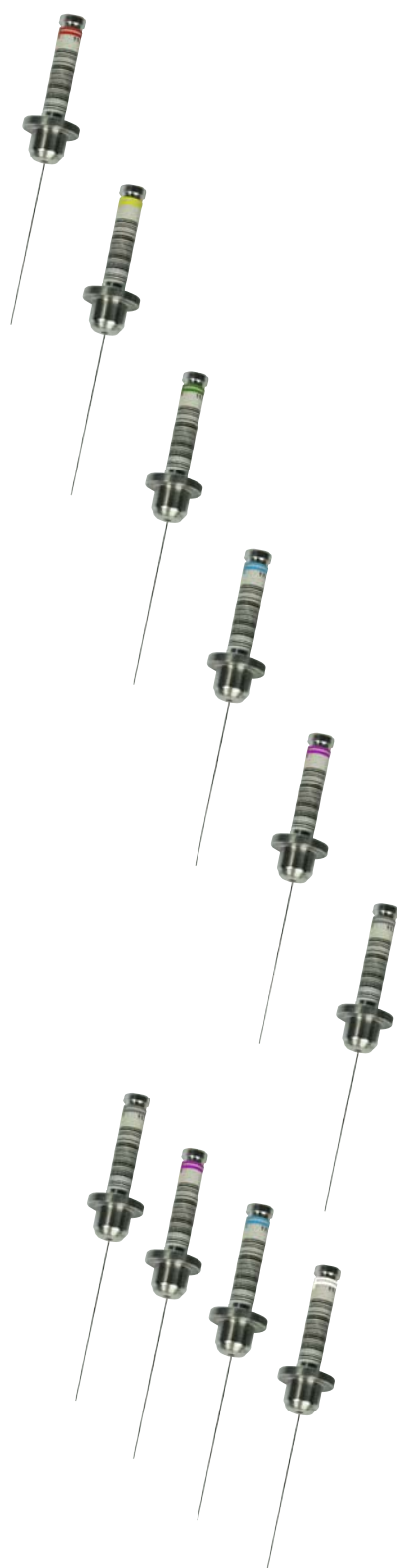
- 65 µm polydimethylsiloxane/divinylbenzene  
23 gauge (OD = 0.63 mm) **093639-038-00**

**flavors**

- 50/30 µm divinylbenzene/carboxen Polydimethylsiloxane  
23 gauge (OD = 0.63 mm) **093639-040-00**
- fiber length 2 cm  
23 gauge (OD = 0.63 mm) **093639-041-00**



Part No.



**MFX SPME Fast Fit Assembly (SPME-FFA)**

for SPME MultiFiber Exchange (MFX) with MPS;  
1 package (3 units)

**volatiles**

100 µm polydimethylsiloxane

23 gauge (OD = 0.63 mm) **093639-804-00**

24 gauge **093639-805-00**

**non-polar semivolatiles**

30 µm polydimethylsiloxane

23 gauge (OD = 0.63 mm) **093639-811-00**

24 gauge **093639-812-00**

**non-polar semivolatiles**

7 µm polydimethylsiloxane

23 gauge (OD = 0.63 mm) **093639-823-00**

24 gauge **093639-824-00**

**volatiles, amines and nitroaromatic compounds**

65 µm polydimethylsiloxane/divinylbenzene on StableFlex fiber

23 gauge (OD = 0.63 mm) **093639-800-00**

24 gauge **093639-801-00**

**flavors**

50/30 µm divinylbenzene/carboxen/Polydimethylsiloxane on StableFlex fiber

23 gauge (OD = 0.63 mm) **093639-802-00**

24 gauge **093639-803-00**

**gases and low molecular compounds**

85µm carboxen/polydimethylsiloxane on StableFlex fiber

23 gauge (OD = 0.63 mm) **093639-808-00**

24 gauge **093639-809-00**

**polar volatiles**

60 µm PEG on StableFlex-Fiber

23 gauge (OD = 0.63 mm) **093639-810-00**

**MFX-SPME FFA Stableflex Assortment Kit**

23 gauge (OD = 0.63 mm), 4 fibers

50/30 µm DVB/Carboxen/PDMS coating

65 µm PDMS/DVB coating

85 µm Carboxen/PDMS coating

85 µm polyacrylate coating

23 gauge (OD = 0.63 mm) **093639-825-00**

Part No.

**MFx SPME FFA Assortment kit 1**

23 gauge (OD = 0.63 mm), 3 fibers

**volatiles and semivolatiles; consists of:**

- ≡ 85 µm polyacrylate coating
- ≡ 100 µm polydimethylsiloxane coating
- ≡ 7 µm polydimethylsiloxane coating

23 gauge (OD = 0.63 mm) **093639-826-00**



**MFx SPME FFA Assortment kit 2**

23 gauge (OD = 0.63 mm), 3 fibers

**volatile or polar organics in water; consists of:**

- ≡ 75 µm Carboxen/polydimethylsiloxane coating
- ≡ 65 µm polydimethylsiloxane/divinylbenzene coating
- ≡ 85 µm polyacrylate coating

23 gauge (OD = 0.63 mm) **093639-827-00**



**MFx SPME FFA Assortment kit 4**

23 gauge (OD = 0.63 mm), 3 fibers

**flavors and odors; consists of:**

- ≡ 100 µm polydimethylsiloxane coating
- ≡ 65 µm polydimethylsiloxane/divinylbenzene coating
- ≡ 75 µm Carboxen/polydimethylsiloxane coating

23 gauge (OD = 0.63 mm) **093639-828-00**



**MFx SPME FFA Assortment kit 5**

23 gauge (OD = 0.63 mm), 3 fibers

**flavors and odors; consists of:**

- ≡ 100 µm polydimethylsiloxane coating
- ≡ 65 µm polydimethylsiloxane/divinylbenzene coating
- ≡ 85 µm Carboxen/polydimethylsiloxane coating
- ≡ 50/30 µm Divinylbenzene/carboxen/polydimethylsiloxane coating

23 gauge (OD = 0.63 mm) **093639-829-00**



**Part No.**

**Sample loop**

SS Sample loop 1/16" for Cheminert injection valve



2 µL	<b>093731-154-00</b>
5 µL	<b>093731-224-00</b>
10 µL	<b>093731-153-00</b>
20 µL	<b>093731-034-00</b>
25 µL	<b>093731-243-00</b>
50 µL	<b>093731-033-00</b>
100 µL	<b>093731-032-00</b>
250 µL	<b>093731-031-00</b>
500 µL	<b>093731-030-00</b>
1000 µL	<b>093731-107-00</b>
2000 µL	<b>093731-108-00</b>
5000 µL	<b>093731-109-00</b>

Sulfinert Sample loop 1/16" for Cheminert injection valve

100 µL	<b>093731-123-00</b>
500 µL	<b>093731-124-00</b>
1000 µL	<b>093731-125-00</b>

PEEK Sample loop 1/16" for Cheminert PAEK injection valve



2 µL	<b>093731-158-00</b>
3 µL	<b>093731-265-00</b>
5 µL	<b>093731-157-00</b>
10 µL	<b>093731-156-00</b>
20 µL	<b>093731-155-00</b>
50 µL	<b>093731-184-00</b>

**Part No.**

SS Sample loop 1/16" for Valco W-Type injection valve

2 µL	093731-049-00
5 µL	093731-050-00
10 µL	093731-051-00
15 µL	093731-052-00
20 µL	093731-011-00
25 µL	093731-053-00
30 µL	093731-054-00
50 µL	093731-010-00
100 µL	093731-009-00
200 µL	093731-070-00
250 µL	093731-055-00
500 µL	093731-008-00
1000 µL	093731-007-00



SS Sample loop 1/16" for Rheodyne injection valve

5 µL	093731-129-00
10 µL	093731-130-00
20 µL	093731-131-00
50 µL	093731-132-00
100 µL	093731-133-00
500 µL	093731-248-00
1000 µL	093731-249-00

PEEK Sample loop 1/16" for Rheodyne injection valve

5 µL	093731-134-00
10 µL	093731-135-00
20 µL	093731-136-00
50 µL	093731-137-00
100 µL	093731-138-00



**GERSTEL GmbH & Co. KG**

Eberhard-Gerstel-Platz 1  
45473 Mülheim an der Ruhr  
Germany

-  +49 (0) 208 - 7 65 03-0
-  +49 (0) 208 - 7 65 03 33
-  [gerstel@gerstel.com](mailto:gerstel@gerstel.com)
-  [www.gerstel.com](http://www.gerstel.com)

**GERSTEL Worldwide**

**GERSTEL, Inc.**

701 Digital Drive, Suite J  
Linthicum, MD 21090  
USA

-  +1 (410) 247 5885
-  +1 (410) 247 5887
-  [sales@gerstelus.com](mailto:sales@gerstelus.com)
-  [www.gerstelus.com](http://www.gerstelus.com)

**GERSTEL AG**

Wassergrabe 27  
CH-6210 Sursee  
Switzerland

-  +41 (41) 9 21 97 23
-  +41 (41) 9 21 97 25
-  [gerstel@ch.gerstel.com](mailto:gerstel@ch.gerstel.com)
-  [www.gerstel.ch](http://www.gerstel.ch)

**GERSTEL K.K.**

1-3-1 Nakane, Meguro-ku  
Tokyo 152-0031  
SMBC Toritsudai Ekimae Bldg 4F  
Japan

-  +81 3 5731 5321
-  +81 3 5731 5322
-  [info@gerstel.co.jp](mailto:info@gerstel.co.jp)
-  [www.gerstel.co.jp](http://www.gerstel.co.jp)

**GERSTEL LLP**

Level 25, North Tower  
One Raffles Quay  
Singapore 048583

-  +65 6622 5486
-  +65 6622 5999
-  [SEA@gerstel.com](mailto:SEA@gerstel.com)
-  [www.gerstel.com](http://www.gerstel.com)

**GERSTEL Brasil**

Av. Pascoal da Rocha Falcão, 367  
04785-000 São Paulo - SP Brasil

-  +55 (11)5665-8931
-  +55 (11)5666-9084
-  [gerstel-brasil@gerstel.com](mailto:gerstel-brasil@gerstel.com)
-  [www.gerstel.com.br](http://www.gerstel.com.br)

Information, descriptions and specifications in this Publication are subject to change without notice. GERSTEL, GRAPHPACK and TWISTER are registered trademarks of GERSTEL GmbH & Co. KG.

© Copyright by GERSTEL GmbH & Co. KG



Awarded for the active pursuit of environmental sustainability